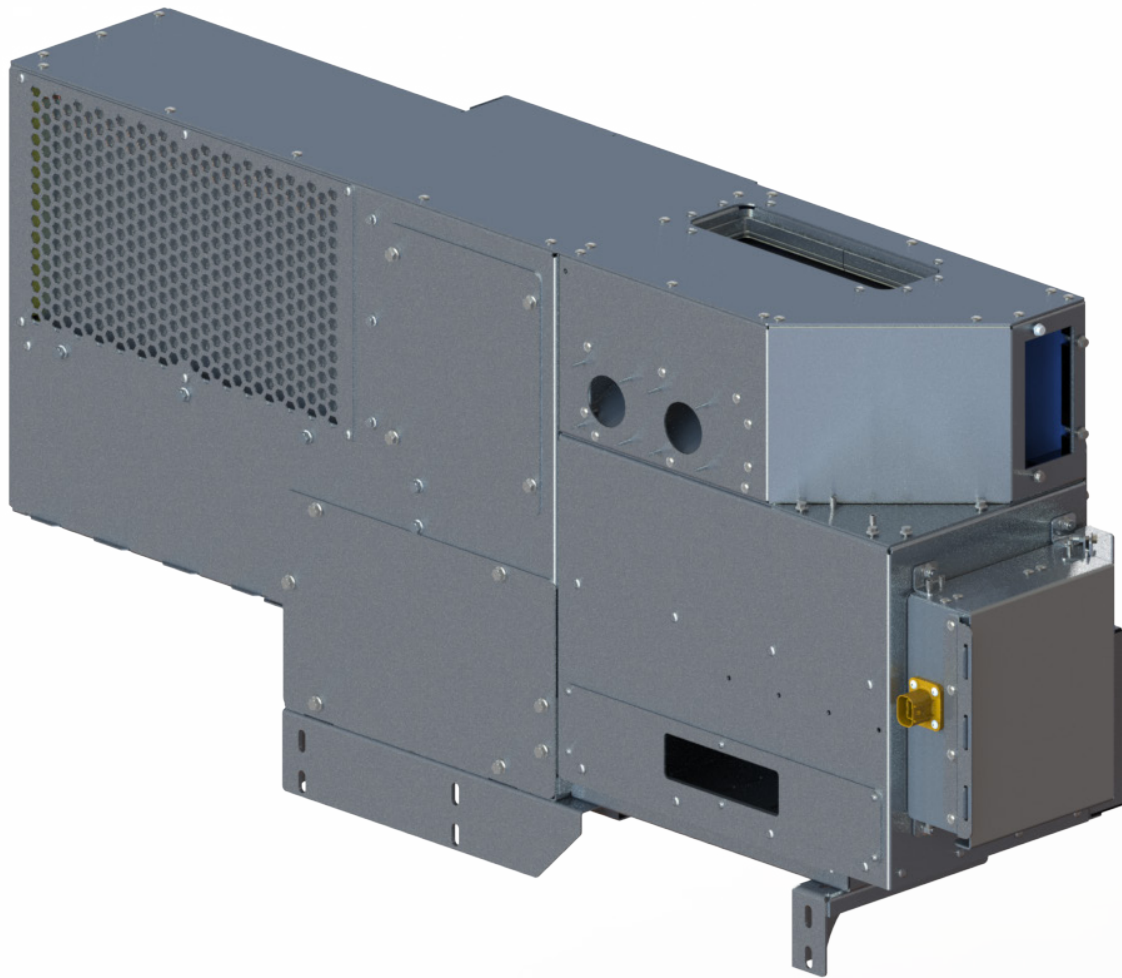


All electric driver cabin HVAC unit

generations of knowledge

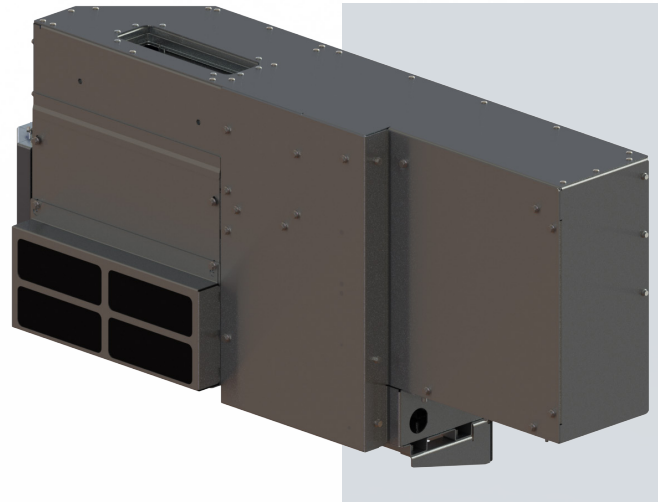


SPECIFICATION & TECHNICAL INFORMATION

All electric driver cabin HVAC unit

The innovative GTS reversible heat pump HVAC unit for zero emission vehicles has been designed to provide windscreen demist / defrost and driver climate control.

Bringing together reversible heat pump technology for efficient heating in low ambient conditions with integrated CAN J1939 controller we have a plug and play solution for any bus, coach, off-highway or on-highway commercial vehicle.



Features & Benefits

- Single assembly refrigerant heat pump system meaning the product can be supplied pre-charged with gas for quick and easy vehicle assembly
- Offered in heat pump only mode or heat pump and air conditioning mode
- Unit available in 100% fresh air or 100% recirculated air or 50%/50%
- COP >2.0 in -5°C ambient with optional 100% fresh air supply. 100% recirculated air provides a higher COP
- Integrated box with compressor, heat exchangers, controller and complete refrigeration system
- PTC heaters installed for low ambient heating and defrost (down to -10°C)
- Brushless blowers (long life)
- Electric expansion valves
- Copper round tube heat exchangers for long life and efficient heat pump performance
- Integrated J1939 CAN controller
- 600VDC, 24VDC and CAN connections required from customer side
- Quick and efficient servicing during fleet operation. The customer can hold a service exchange unit in stock. Rather than repairing on the vehicle which could take a number of hours (de-gas, repair, vac and re-gas etc.) they can remove and replace with a service exchange unit within one hour and perform the unit service on a work bench in the depot

Specifications

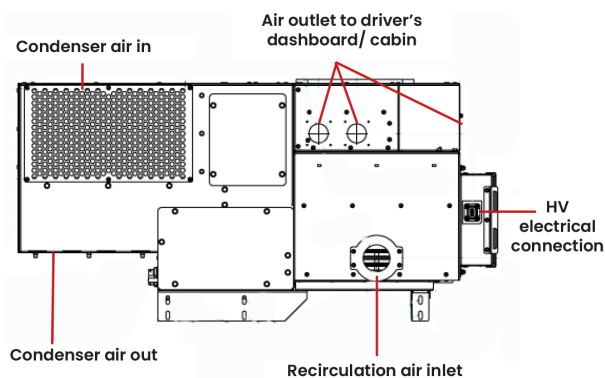
Power Information	24VDC for Blowers and control 600VDC (420-750VDC) for Compressor
Refrigerant	R407C 1.3kg
Heating performance	8kW @ 0°C ambient, 40°C air-off temperature, COP 1.95 6kW @ -5°C ambient, 37°C air-off temperature, COP 1.98 <i>Above values are 92% fresh air and 8% recirculated air, greater COP possible with more recirculated air.</i>
Cooling performance	3.5kW @ 40°C ambient, 18°C air-off temperature <i>Above values are 92% fresh air and 8% recirculated air, greater COP possible with more recirculated air.</i>
Minimum operating temperature	-10°C with PTC heating as an assist Maximum operating temp 45°C
Weight	53kg
Dimensions	1155.5mm x 544mm x 288.5mm

Annotated view

Top View



Front View



Back View

