

# ELECTRIC MOTOR AND POWER ELECTRONICS COOLING

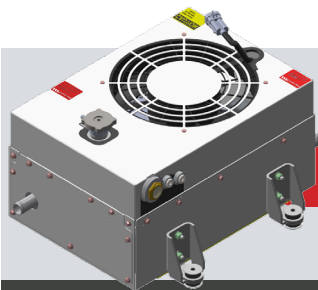
## Electric Motor and Power Electronics Cooling Modules overview

As electric traction systems become more complex, GTS has a range of power electronics cooling systems suitable for a variety of applications across the bus and coach, off-highway, commercial vehicle and specialist vehicle sectors.

Ranging from 1-fan to 9-fan, our systems are configurable with integrated fan control (V3 controller) and header tanks. We will work with you to calculate the most suitable system to meet your thermal performance requirements, based on your ambient temperature limit, coolant flow rate (l/min), heat rejection (kW) and desired coolant temperature.

Taking a solution from our large range of existing products can provide you with the peace of mind that the system is reliable from a proven track record of operating across different vehicle markets worldwide. We are confident we have a plug-and-play solution to meet your needs today.

## TECHNICAL SPECIFICATIONS



**CP-6082-100**

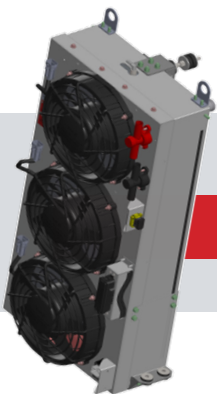
Integrated Header Tank & No V3

L (mm) (Inch)	W (mm) (Inch)	D (mm) (Inch)	Weight (kg) (lb)	Amb Capability (°C) (°F)	Cooling (kW) (Btu/hr)	Coolant Flow (l/min)	Coolant Outlet Temperature (°C) (°F)
530 20.8	371 14.6	230 9	29.5 65	46 114	6 20472	22l/min	55 131



**CP-6064-000**

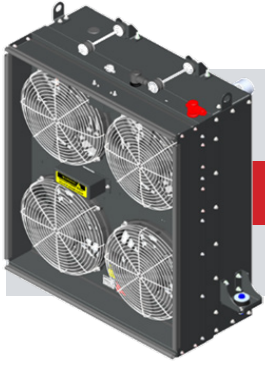
L (mm) (Inch)	W (mm) (Inch)	D (mm) (Inch)	Weight (kg) (lb)	Amb Capability (°C) (°F)	Cooling (kW) (Btu/hr)	Coolant Flow (l/min)	Coolant Outlet Temperature (°C) (°F)
602 23.7	630 24.8	275 10.8	41.36 91	50 122	25 85303	40 l/min	73 163



**CP-4771-300**

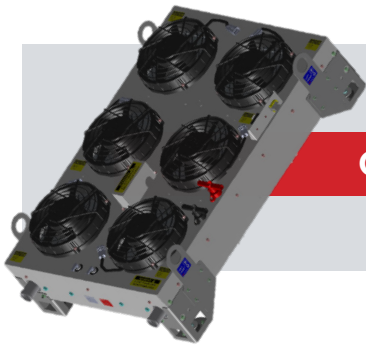
L (mm) (Inch)	W (mm) (Inch)	D (mm) (Inch)	Weight (kg) (lb)	Amb Capability (°C) (°F)	Cooling (kW) (Btu/hr)	Coolant Flow (l/min)	Coolant Outlet Temperature (°C) (°F)
998 39.2	567 22.3	310 12.2	58.25 128	41 105	14 47769	63 l/min	50 122

## TECHNICAL SPECIFICATIONS



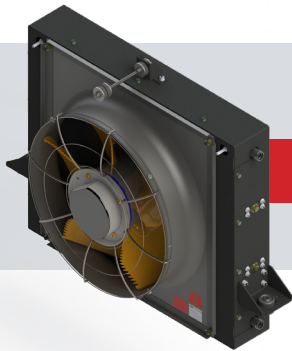
**CP-4705-200**

L (mm) (Inch)	W (mm) (Inch)	D (mm) (Inch)	Weight (kg) (lb)	Amb Capability (°C) (°F)	Cooling (kW) (Btu/hr)	Coolant Flow (l/min)	Coolant Outlet Temperature (°C) (°F)
827 32.5	906 35.6 1081.5 42.5	393 15.4	110.24 243	48 118	100 341214	200 l/min	95 203



**CP-6345-000**

L (mm) (Inch)	W (mm) (Inch)	D (mm) (Inch)	Weight (kg) (lb)	Amb Capability (°C) (°F)	Cooling (kW) (Btu/hr)	Coolant Flow (l/min)	Coolant Outlet Temperature (°C) (°F)
1364 53.7	906 35.6	438 17.2	132.47 292	50 122	35 119424	50 l/min	55 131



**CP-4465-000**

L (mm) (Inch)	W (mm) (Inch)	D (mm) (Inch)	Weight (kg) (lb)	Amb Capability (°C) (°F)	Cooling (kW) (Btu/hr)	Coolant Flow (l/min)	Coolant Outlet Temperature (°C) (°F)
725 28.5	869 34.2	305 12.0	59.8 131	41 105	20 68242	50 l/min	59 138